



Power Brick +

12v Lithium-Ion battery pack



12V battery pack - Lithium Iron-Phosphate (LiFePO₄) - 250Ah

- **High Service Life** : 3000 cycles and more (see chart)
- **Deep discharge** allowed up to 100 %
- Ultra safe **Lithium Iron Phosphate** chemistry (no thermal run-away, no fire or explosion risks)
- **Embedded BMS** (Battery Management System) : **improve lifespan AND secure the battery**
- No **Lead**, no **rare earths**, no **acid**, no **degassing**
- Calendar life > **10 years**
- Excellent **temperature** robustness (-20 °C up to +60 °C)
- **Flexible** deployment : up to 16 packs in parallel and 4 in series
- **Constant power** during discharge (very low internal resistance)
- **Very low Peukert's losses** (energy efficiency >98 %)
- **Very low self discharge** (<3 % per month)
- **No memory effect**
- About **50 % lighter** and **40% smaller** than equivalent Lead-AGM battery with same usable energy
- **Certification** : CE, RoHS, UN 38.3

Technical Specifications

Electric	Nominal voltage / Nominal capacity	12.8V / 200Ah
	Stored energy	3.2 kWh
	Volumetric energy density / Specific energy	125.4 Wh/L / 115.1 Wh/Kg
	Internal resistance	≤ 50mΩ
	Cycles	>3000 cycles (see chart)
	Self discharge	< 3% per month
	Energy efficiency	> 98%
Standard Charge	Charge voltage	14.4 V ± 0.2 V (Optional floating voltage : 13.36V max)
	Charge mode	CC/CV : Constant Current / Constant Voltage
	Continuous charge current / Maximum charge current	125 A / 150 A
	BMS charge cut-off voltage	14.8 V ± 0.1V
Standard Discharge	Instant peak discharge current	700 A ± 50 A (max 100mS)
	Continuous discharge current	180 A (2.31 kW)
	Maximum discharge current (< 30s)	250 A (3.2 kW)
	BMS discharge cut-off voltage	10 V
Environment	Charge temperature range	0°C to +60°C
	Discharge temperature range	-20°C to +60°C
	Storage temperature	0°C to +50°C @60±25% relative humidity
	IP protection level	IP 65
Mechanical	Type of cells	Cylindrical
	Casing material	ABS
	Dimensions	L : 500mm (520mm) x P : 239mm x H : 217 mm
	Weight	27.8 kg
	Terminal	M8 bolt



APPLICATIONS

- **Electrical vehicles and utilities**
- **Robotics and AGVs**
- **Solar and wind energy storage**
- **Marine**
- **Street lightning**
- **CCTV and security camera**
- **UPS, electric back-up**
- **Telecom**
- **Medical equipments**

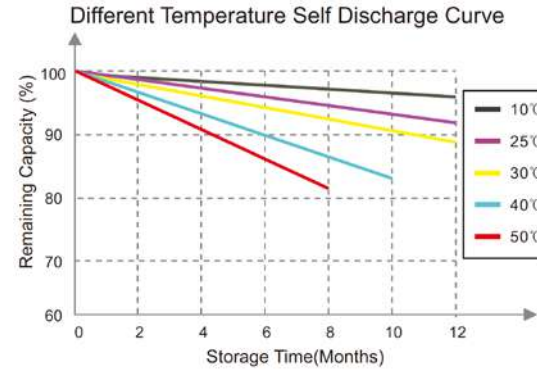
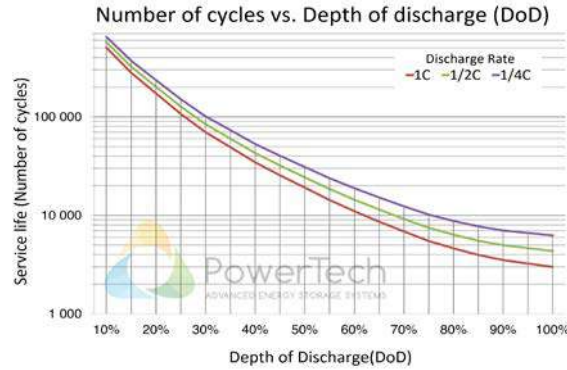
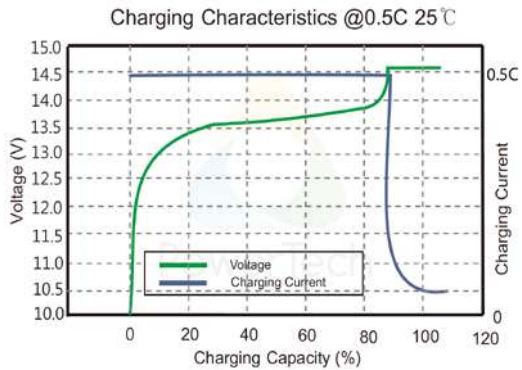
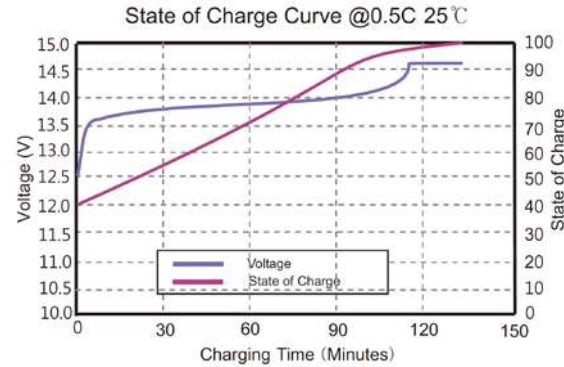
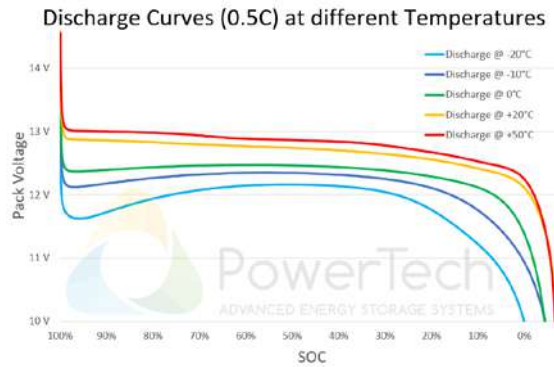
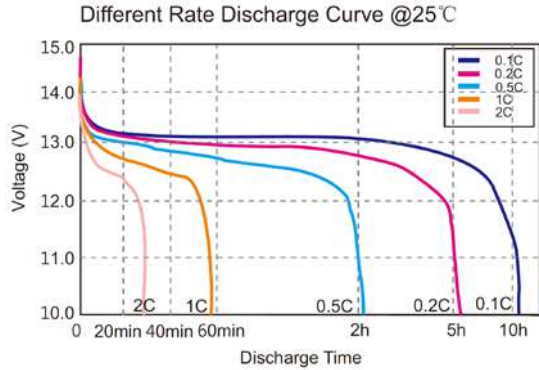


PowerBrick+

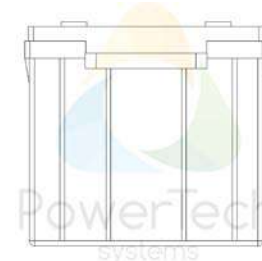
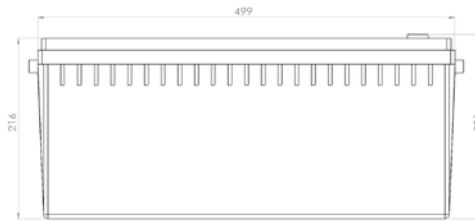
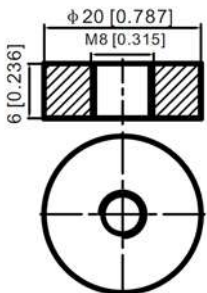
12v Lithium-Ion battery pack



Charts and curves



Dimensions



V1.5

PowerTech Systems SAS
 ZA Charles Renard - Batiment A1
 6 Bld Georges Guynemer
 78210 ST CYR L'ÉCOLE - France

SAS au capital de 1 000 000 Euros
 SIREN : 793926577 - TVA : FR33793926577

www.powertechsystems.eu
 +33 185 400 970
 contact@powertechsystems.eu