

# Ni-Cd VRE C



ARTS Energy's VRE standard Ni-Cd series are perfectly suited to cycling applications. It is designed for a wide range of applications requiring a high level of robustness.

To meet customers' requirements, ARTS Energy provides custom-designed and standardised battery packs.

For your battery design and system needs, please contact ARTS Energy.



## ELECTRICAL CHARACTERISTICS

• Nominal voltage (V)	1.2
• Typical capacity (mAh)*	3000
• IEC minimum capacity (mAh)*	2900
• IEC designation	KRM 26/50
• Impedance at 1000 Hz (mΩ)	3.5

\* Charge 16 h at C/10, discharge at C/5.

## DIMENSIONS

• Diameter (mm)	25.05 ± 0.1
• Height (mm)	49 ± 0.3
• Top flat area diameter (mm)	10
• Weight (g)	86

Dimensions are given for bare cells.

## CHARGE CONDITIONS

	Temp. (°C)	Current
• Standard	0 to +40	C/10
• Fast	0 to +40	3A max

End of Fast charge cut-off is requested:  $-dV$  or  $dT^{\circ}C/dt$

## DISCHARGE CONDITIONS

Temp. (°C)	Current
+10 to +60	12A max
-30 to +60	1C max
-40 to +60	C/2 max

## CYCLING DURATION

- Full cycle > 500 cycles  
(100% DOD - C charge and C discharge at +20°C)

## APPLICATIONS

- Professional electronics
- Professional lighting equipment
- Military equipment

## MAIN BENEFITS

- Excellent cycling performance
- High power
- Superior robustness
- Extreme low temperatures (-40°C)

## TECHNOLOGY

- Sintered positive electrode
- Plastic bonded negative electrode

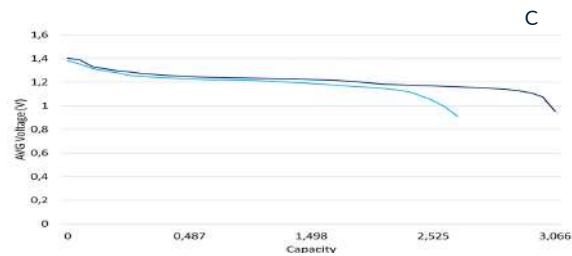
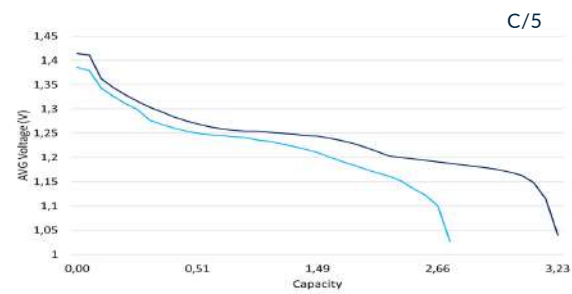
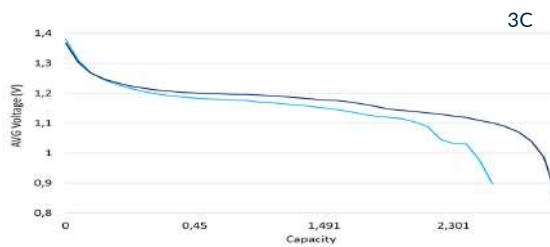


ARTS ENERGY  
MAKE A BETTER PLACE TO LIVE



## Performances +20°C

Serie A : Previous  
Serie C : Evolution 2023



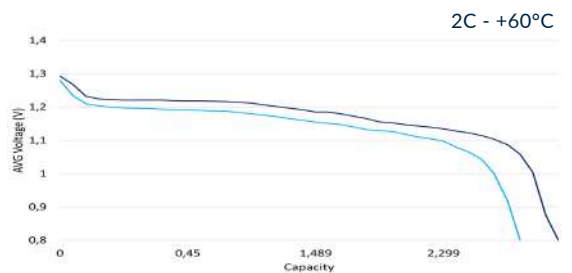
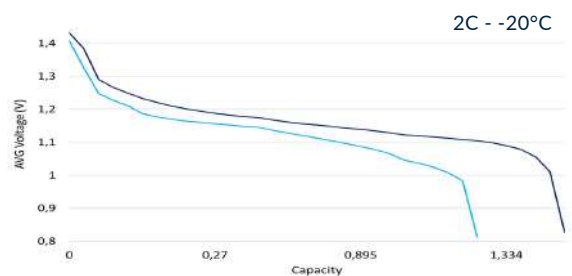
## STORAGE

Recommended: + 5°C to + 25°C

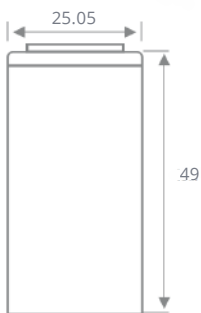
Relative humidity: 65 ± 5 %

## Temperature Current Performances

Serie A : Previous  
Serie C : Evolution 2023

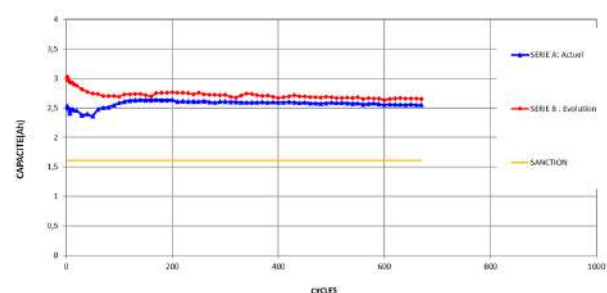


## TYPICAL DIMENSIONS



Typical dimensions (mm). Without tube.

## Cycling Performances



The operation of the battery must strictly be in accordance with ARTS Energy technical recommendations, to obtain the performances stated by ARTS Energy.

Data is given for single cells. Please consult ARTS Energy for utilisation of cells outside specification.

Data in this document is subject to change without notice and become contractual only after written confirmation by ARTS Energy



**ARTS ENERGY**  
MAKE A BETTER PLACE TO LIVE